

City of CORTEZ SAFETY ACTION PLAN 2024

SPONSORS



Be Aware, Show You Care

FOCUSING ON KSI CRASHES

The Safety Action Plan focuses on fatal crashes and crashes that resulted in serious injuries. These are known as **Killed or Serious Injury Crashes**, or KSI crashes. It also focuses on **Vulnerable Road Users** (people walking, biking, and riding motorcycles) because they are less protected from injury in a crash. By focusing on KSI crashes and Vulnerable Road Users crashes rather than property damage crashes, we can make progress towards the goal of zero traffic fatalities in Cortez.

★ TAKE THE SURVEY! ★



bit.ly/cortez-safe-streets-survey

536

crashes occurred in
Cortez from 2018 to 2022



5 PEOPLE WERE
KILLED

0 in a Car



2 on a Motorcycle



3 Walking

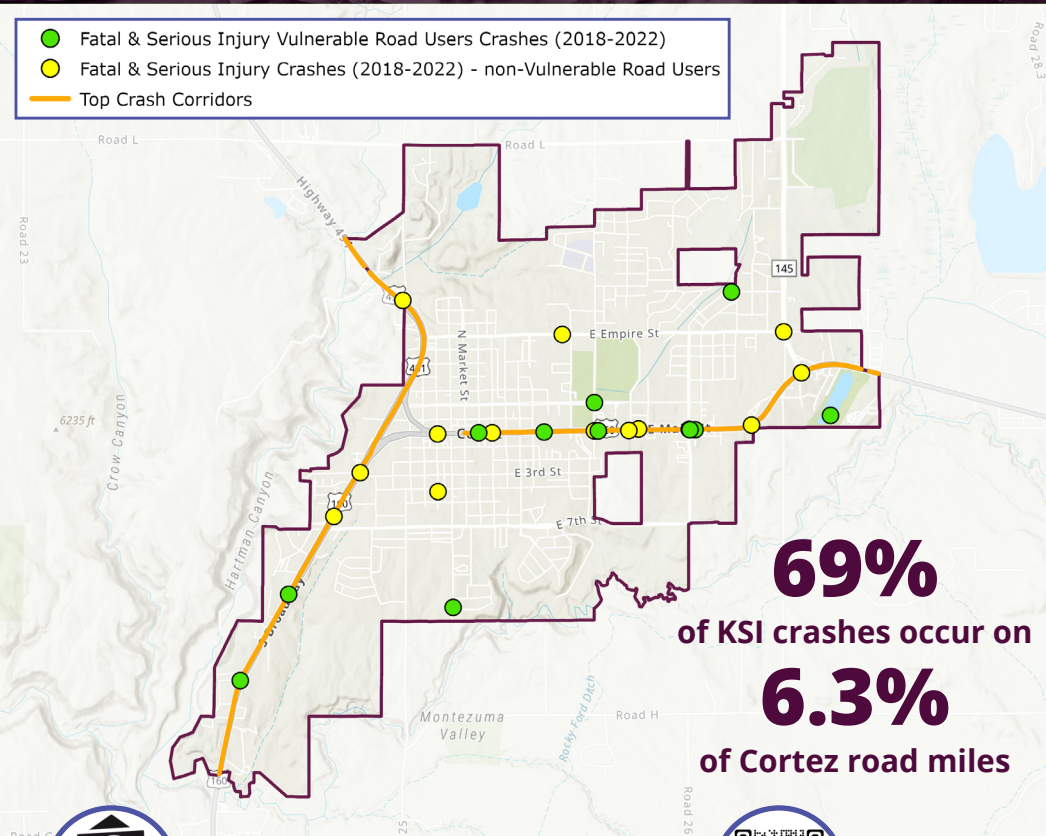
21 PEOPLE WERE
SERIOUSLY INJURED

14 in a Car

2 on a Motorcycle

5 Walking

- Fatal & Serious Injury Vulnerable Road Users Crashes (2018-2022)
- Fatal & Serious Injury Crashes (2018-2022) - non-Vulnerable Road Users
- Top Crash Corridors



69%
of KSI crashes occur on
6.3%
of Cortez road miles



72%
of crashes occurred at
intersections or driveways



While alcohol/drugs are involved in **12%** of all crashes, they are present in **40%** of fatal crashes and **25%** of serious injury crashes.



CortezSafeStreets@bhinc.com



cortezsafestreets.com



505-264-0111